

# ICS

INTELLIGENT CAMERA SYSTEMS

## Focus on real image!

**ICS 3158DN**

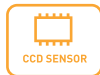
SUPER HAD SONY Digital Dome Color

**ICS 4154DN**

SUPER HAD SONY Digital Dome Color

**ICS 3558DN**

SAMSUNG Digital Dome Color Camera

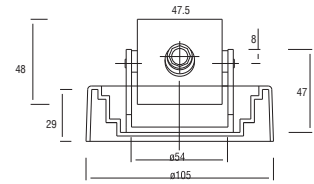
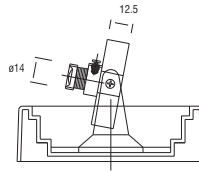


Electronics Ltd. Co.

[www.pcc.com.tr](http://www.pcc.com.tr)

Phone: +90 216 365 03 03

[www.3deyes.com](http://www.3deyes.com)



### ICS 3158DN

### ICS 4154DN

### ICS 3558DN

GENERAL			
Pick Up Element	1/3" COLOR SUPER HAD SONY CCD	1/4" COLOR SUPER HAD SONY CCD	1/3" COLOR SAMSUNG CCD
Number Of Pixel	NTSC : 768(H)X494(V) PAL : 752(H) X 582(V)	NTSC:768(H)X494(V) PAL:752(H)X582(V)	NTSC:768(H)X494(V) PAL:752(H)X582(V)
Resolution	480 TVL	480 TVL	480 TVL
Electronics Shutter	NTSC 1/60 ~ 1/100.000 PAL 1/50 ~ 1/100.000	NTSC 1/60 ~ 1/100.000, PAL 1/50 ~ 1/110.000	NTSC 1/60 ~ 1/100.000, PAL 1/50 ~ 1/110.000
Minimum Illumination	0,5 Lux, F 2.0	0.5 Lux / F 2.0	0.5 Lux / F 2.0
S/N Ratio	More than 48 dB	More than 48 dB	More than 48 dB
Iris	3.6 Fix lens	3.6 Fix lens	3.6 Fix lens
Day/Night	Yes	Yes	Yes
AGC	Auto	Auto	Auto
BLC	Auto	Auto	Auto
AWB	Auto	Auto	Auto
Video Output	1.0 Vp-p/75 Ohms	1.0 Vp-p / 75 Ohms	1.0 Vp-p / 75 Ohms
Microphone	Optional	Optional	Optional
ELECTRICAL			
Power Source	12V DC $\pm$ 10%	12V DC $\pm$ 10 %	12V DC $\pm$ 10 %
Power Consumption	2 W	2 W	2 W
Video Connector	BNC	BNC	BNC
MECHANICAL			
Lens Mount	3.6 Fix lens	3.6 Fix lens	3.6 Fix lens
ENVIROMENTAL			
Operating Temperature	-10 ~ 50 iC	-10 iC ~ 50 iC	-10 iC ~ 50 iC
Storing Temperature	-10 ~ 70 iC	- 10 iC ~ 70 iC	- 10 iC ~ 70 iC
Humidity Resistance(operating)	%20 ~ %80	%20 ~ %80	%20 ~ %80
Humidity Resistance(storing)	%20 ~ %80	%20 ~ %80	%20 ~ %80
PHYSICAL			
Dimensions	108(W), 82(H)	108 (W), 82 (H)	108 (W), 82 (H)
Net Weight	260 g	260 g	260 g