

# ICS

INTELLIGENT CAMERA SYSTEMS

## Focus on real image!

### ICS 3178SDN

SUPER HAD SONY Digital CCD Color Camera

### ICS 3578SDN

SAMSUNG Digital CCD Color Camera

### ICS 4174SDN

SUPER HAD SONY Digital CCD Color Camera

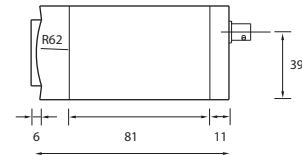
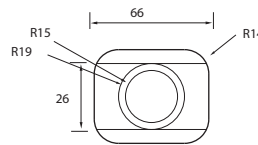


Electronics Ltd. Co.

[www.pcc.com.tr](http://www.pcc.com.tr)

Phone: +90 216 365 03 03

[www.3deyes.com](http://www.3deyes.com)



### ICS 3178SDN

### ICS 3578SDN

### ICS 4174SDN

GENERAL			
Pick Up Element	1/3" SUPER HAD SONY CCD Sensor	1/3"SAMSUNG CCD Sensor	1/4"SUPER HAD SONY CCD Sensor
Number Of Pixel	NTSC : 768(H)X494(V) PAL : 752(H) X 582(V)	NTSC:768(H)X494(V) PAL:752(H)X582(V)	NTSC:768(H)X494(V) PAL:752(H)X582(V)
Resolution	480 TVL	480 TVL	480 TVL
Electronics Shutter	NTSC 1/60 ~ 1/100.000 PAL 1/50 ~ 1/100.000	NTSC 1/60 ~1/100.000, PAL 1/50 ~ 1/110.000	NTSC 1/60 ~1/100.000, PAL 1/50 ~ 1/110.000
Minimum Illumination	0,5 Lux / F 2.0	0.5 Lux / F 2.0	0.5 Lux / F 2.0
S/N Ratio	More than 48 dB	More than 48 dB	More than 48 dB
Iris control	Video / DC Drive	Video / DC Drive	Video / DC Drive
Day/Night	Yes	Yes	Yes
AGC	On-off	On-off	On-off
BLC	On-off	On-off	On-off
AWB	On-off	On-off	On-off
Video Output	1.0 Vp-p / 75 Ohms	1.0 Vp-p / 75 Ohms	1.0 Vp-p / 75 Ohms
Microphone	Optional	Optional	Optional
ELECTRICAL			
Power Source	12V DC $\pm$ 10%	12V DC $\pm$ 10 %	12V DC $\pm$ 10 %
Power Consumption	2 W	2 W	2 W
Video Connector	BNC	BNC	BNC
MECHANICAL			
Lens Mount	C/CS	C/CS	C/CS
ENVIROMENTAL			
Operating Temperature	-10 iC ~ 50 iC	-10 iC ~ 50 iC	-10 iC ~ 50 iC
Storing Temperature	-10 iC ~ 70 iC	- 10 iC ~ 70 iC	- 10 iC ~ 70 iC
Humidity Resistance(operating)	%20 ~ %80	%20 ~ %80	%20 ~ %80
Humidity Resistance(storing)	%20 ~ %80	%20 ~ %80	%20 ~ %80
PHYSICAL			
Dimensions	109(L), N 66(W), N 54(H)	109(L) , 66 (W), 54 (H)	109(L) , 66 (W), 54 (H)
Net Weight	282 g	282 g	282 g